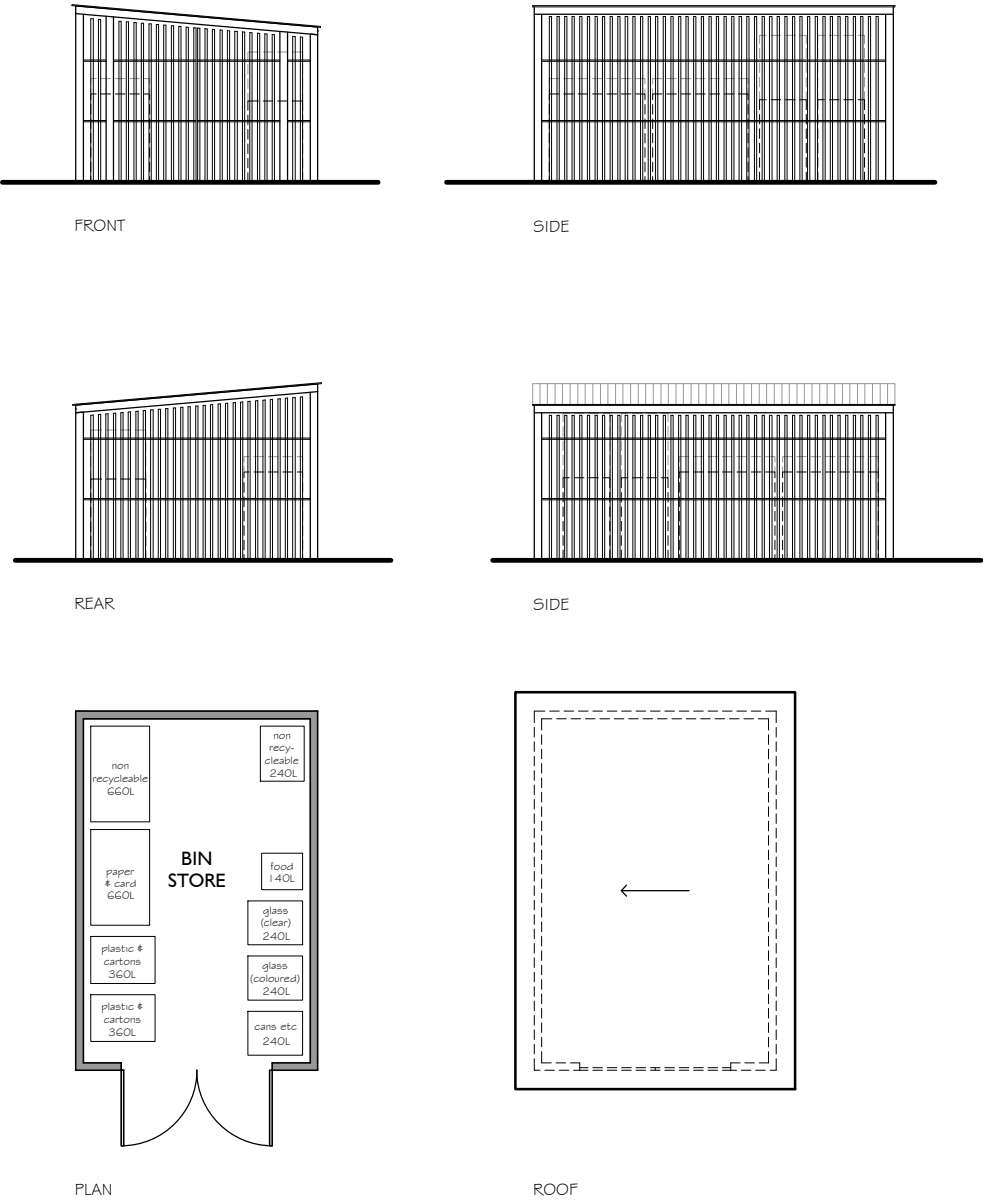
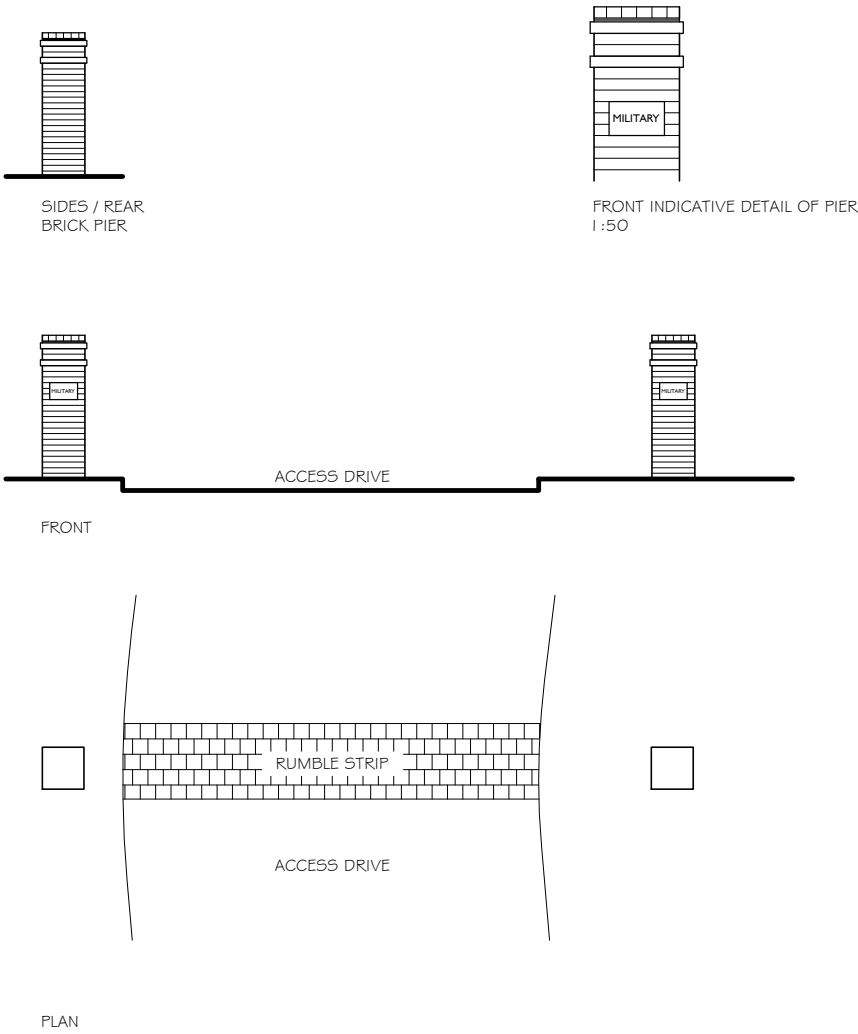


Do not scale from this drawing. All information shown is to be checked on site for accuracy and fit. Any discrepancies or omissions to be reported to Arcady Architects immediately.



BIN STORE (PLOTS 21 - 28)



BRICK PIERS (ACCESS DRIVE)

PRELIMINARY

REVISION:	DATE:	DRAWN:
PROJECT: 72 - 86 MILITARY ROAD, COLCHESTER	Arcady ARCHITECTS	
TITLE: PROPOSED BINS STORE & PROPOSED BRICK PIERS TO ACCESS		
SCALE: 1:100 @ A3	DATE: NOV 25	DRAWN: HO
No. 25/07/20	REV. -	CHKD: -
Unit 4 Phillows Barns Hammonds Road Little Baddow Essex CM3 4BG Tel: 01245 464681 www.arcadyarchitects.co.uk		

